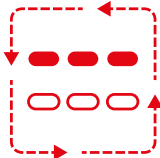


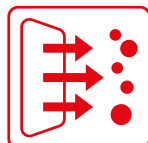


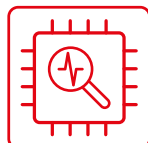


Valera+
PROFESSIONAL

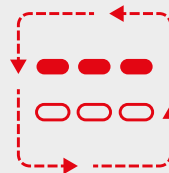
GENIUSCARE AI / GENIUSCARE AI PULSE

QUICK START GUIDE



Auto check		AUTO CHECK DIAGNOSTIC	1
DISPLAY Setting		5 PRESET STYLING MODES	2
MANUAL Setting		9 MANUAL AIR/HEAT SETTINGS	3
Clean Filter		CLEAN FILTER EASY & AUTOMATIC	4
Manual Cleaning		CLEAN FILTER MANUAL	5
Diagnostics 1/2			6
Diagnostics 2/2			7

Auto check

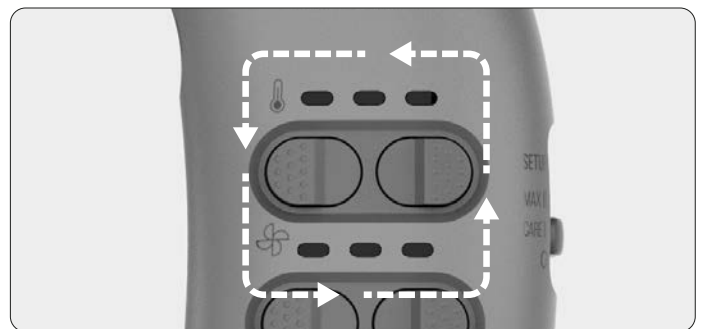


AUTO CHECK
DIAGNOSTIC

1

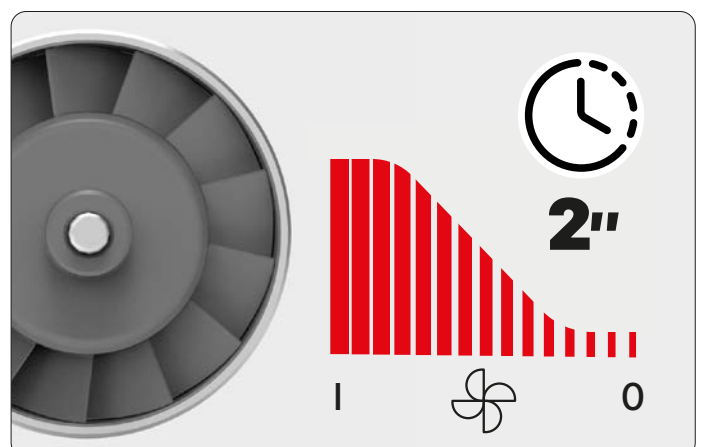
Plug-in/Check

Each time the plug is reinserted into the socket (20 seconds after the last time it was removed), the hairdryer automatically checks its functions. The self-checking LED lights flash in quick succession.



Check/Off

When switching off, the motor continues to run for a few seconds to cool down the components. The self-checking LEDs flash in quick succession until the appliance is completely switched off.



DISPLAY Setting



5 PRESET
STYLING MODES

2

The revolutionary Selexa AI high-speed hairdryer delivers flawless styling results with advanced display-controlled modes.

DISPLAY

5 preset modes allow precise adjustment of temperature and airflow within an optimal range.

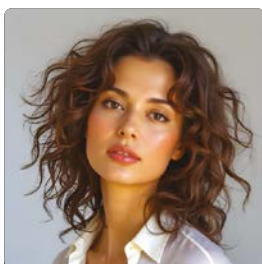


DIFFUSER

Defined and shiny curls



ION

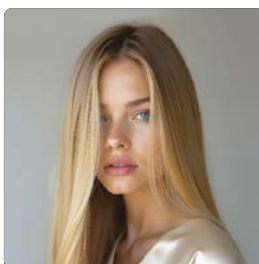


SOFT CARE

Natural, effortless look



ION

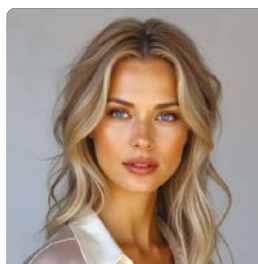


GLOSSY

Straight and glossy hair



ION

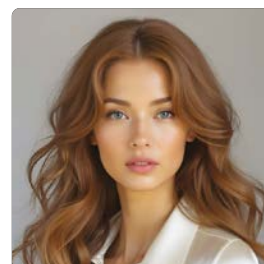


WAVES

Transform straight to wavy hair



ION

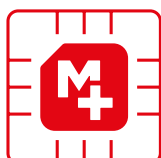


ION OFF

More volume and texture



ION



**MULTY
MEMORY
FUNCTION**

Upon resuming operation after a break, the hairdryer automatically reverts to the last utilised combination of temperature and air speed settings, ensuring a hassle-free experience.

MANUAL Setting



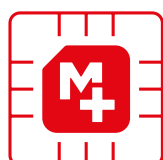
9 MANUAL
AIR/HEAT SETTINGS

3

Manual configuration offers complete flexibility. The durable, long-life digital motor ensures high air pressure and airflow.

MANUAL

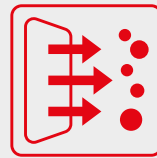
9 modes allow precise adjustment of temperature and airflow within an optimal range.



MULTY MEMORY FUNCTION

Upon resuming operation after a break, the hairdryer automatically reverts to the last utilised combination of temperature and air speed settings, ensuring a hassle-free experience.

Clean Filter



CLEAN FILTER
EASY & AUTOMATIC

4

Filter cleaning function by reversing the airflow direction.

1. Indicator light

After 20 hours of hairdryer operation, the "clean filter" LED light flashes orange.



2. Start cleaning

Keep the "clean filter" button pressed for at least 2 seconds, and filter cleaning will start automatically.

ATTENTION: Automatic cleaning can only be started when the "clean filter" LED light flashes orange.



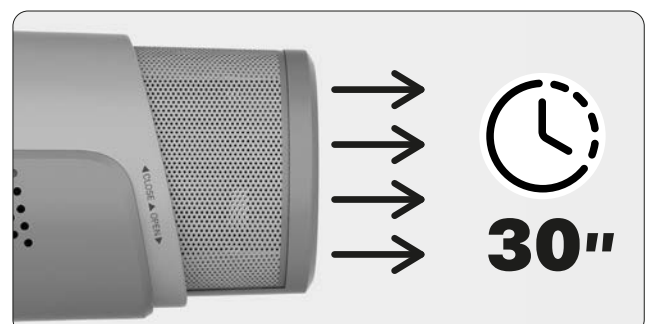
3. Automatic cleaning

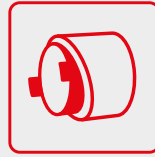
During airflow reversal, the LED remains solid orange without blinking.



4. End

Once the cleaning cycle is completed, the "clean filter" LED turns green for 2 seconds before turning off.

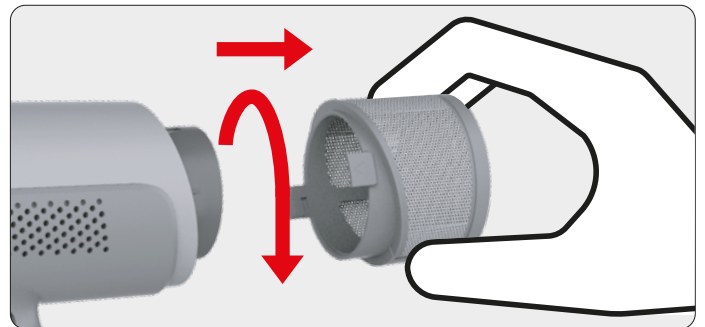




The air intake filter must always be kept free of impurities. In addition to the programmed self-cleaning function, frequent manual cleaning is recommended.

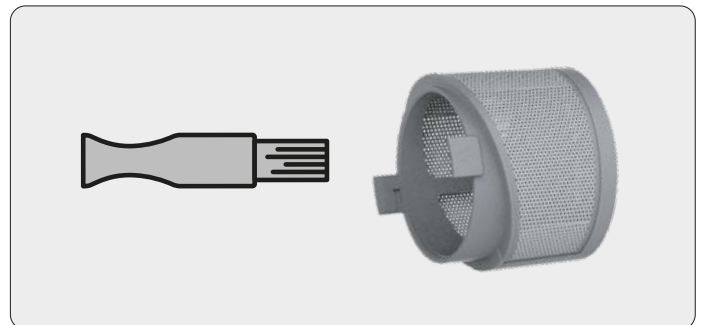
1. Remove

Depending on the model, the filter can be removed either by slightly turning it counterclockwise or by pulling it out.



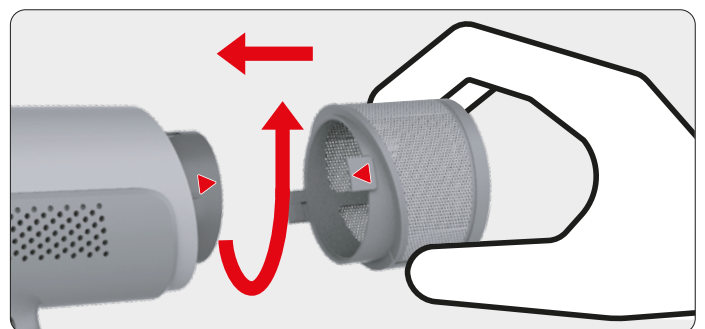
2. Brush

Remove dust and hair with a cleaning brush.



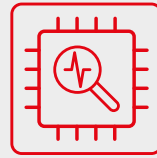
3. Replace

Reposition the clean filter, turn it clockwise and gently tighten it or insert it and gently tighten it depending on the model.



CAUTION

The hairdryer must always be used with the filter. Using it without a filter will irreparably damage it and invalidate the manufacturer's warranty.



If the hairdryer locks, the LED lights identify the problem.



**Hardware protection
against current peaks**



**Software protection
against current peaks**



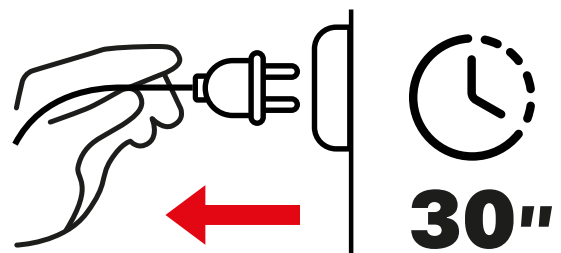
Overcurrent



Low voltage

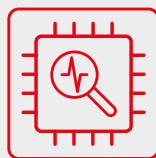
Reset appliance*

- Switch off the hairdryer
- Pull the plug out of the socket
- Wait for 30 seconds
- Insert the plug into the socket
- Switch on the hairdryer



(*) In case the problem persists, contact support.

Diagnostics 2/2



7

If the hairdryer locks, the LED lights identify the problem.



Motor blocked



Phase anomaly



Other

The hairdryer must undergo maintenance in a Valera service centre.

